



orange



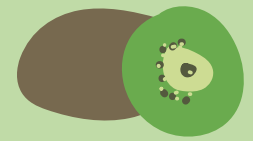
pomme



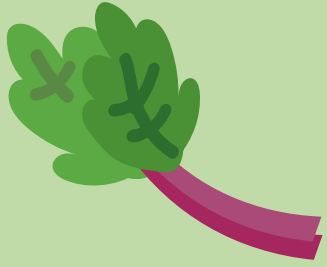
fraise



poire



kiwi



rhubarbe



endive



navet



carotte



poireau



asperge

LES FRUITS & LÉGUMES D'AVRIL



artichaut



chou-fleur

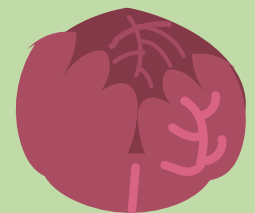


chou

#RESPECT



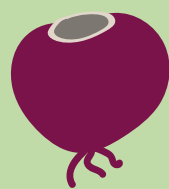
épinard



chou rouge



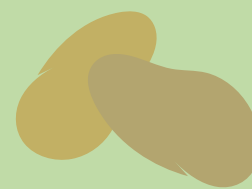
rutabaga



betterave



Mâche



pdt



persil



ail



radis



salade



oignon

**#LÉOPOLD
(C'EST DE SAISON)**



MAGASIN BIO



champignon
de Paris